



Company : Santos

Well : Henry 2DW1 ST1

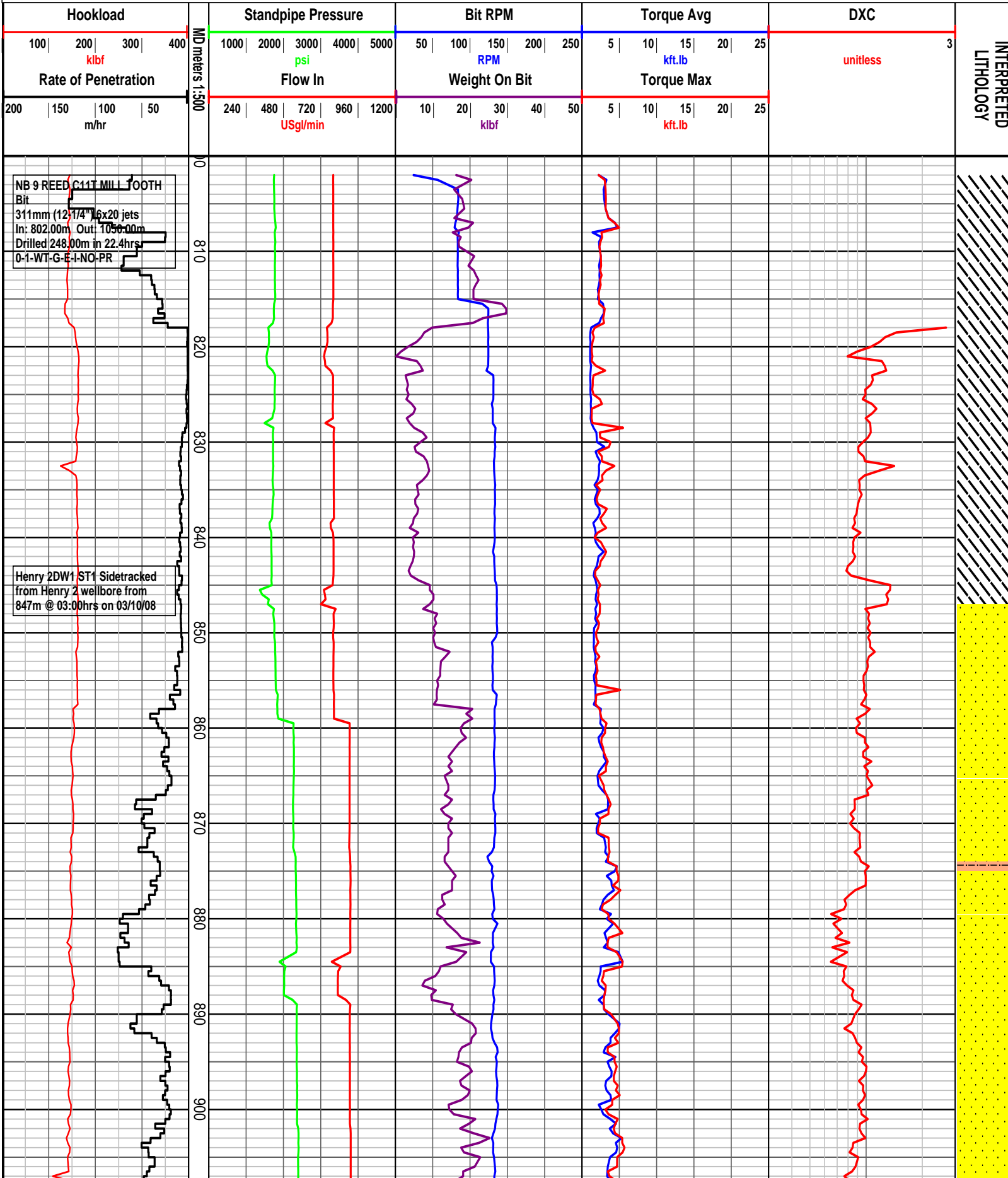
Interval : 802.00 - 1300.00 meters

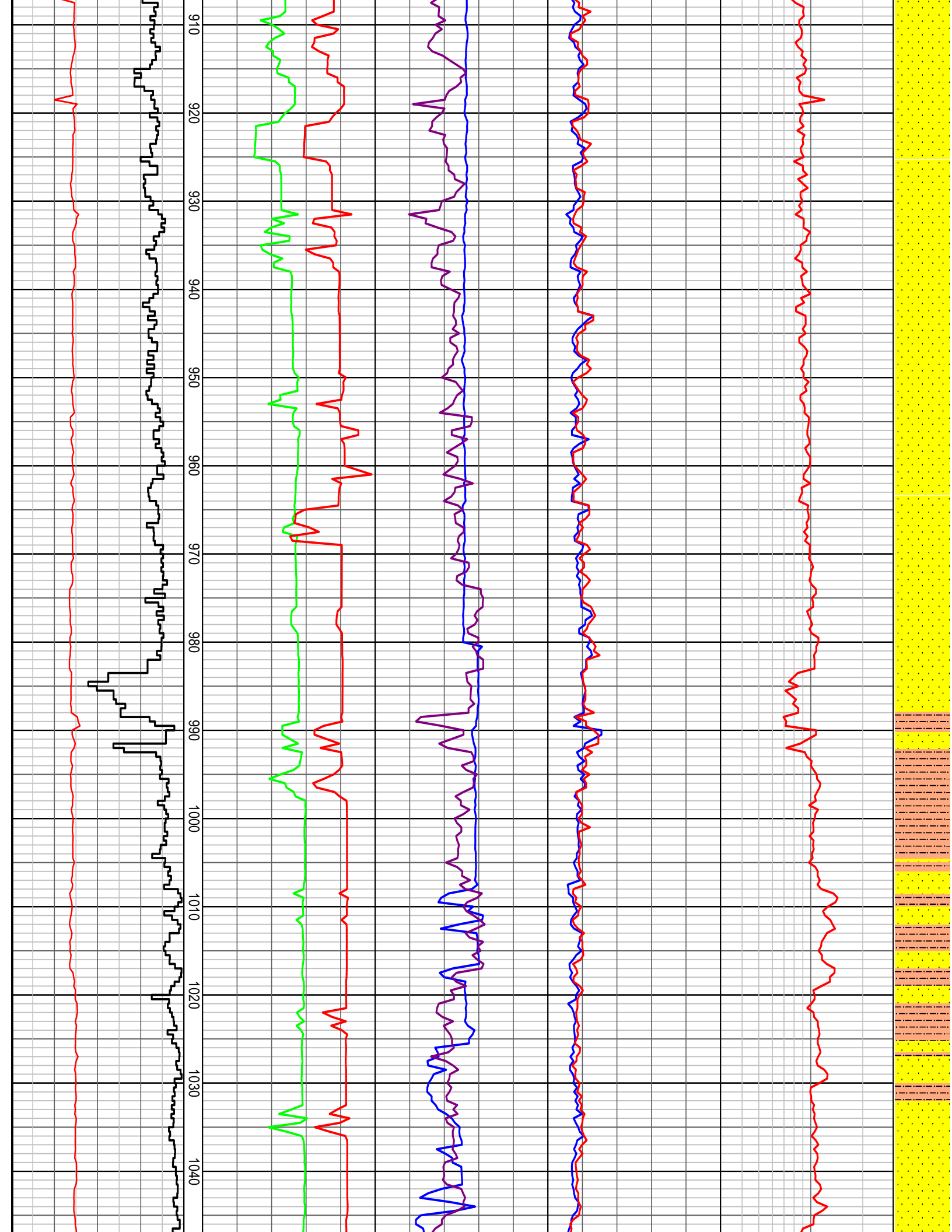
Created : 06/Oct/2008 5:16:35 AM



INTEQ

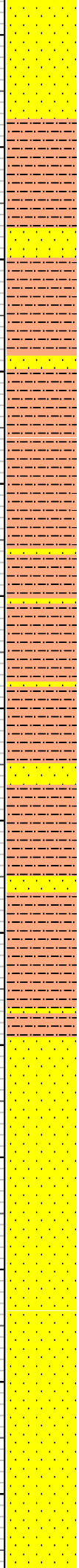
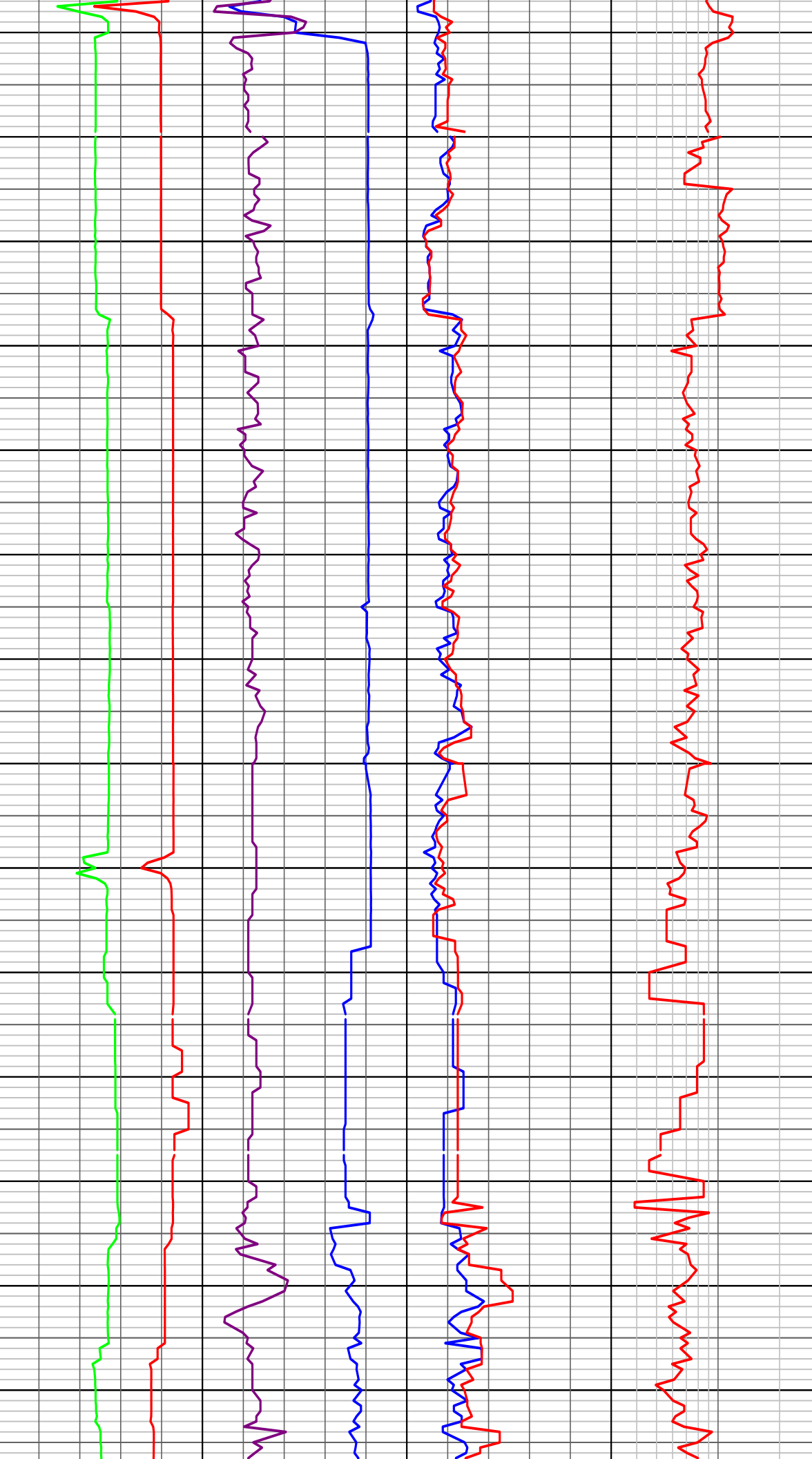
HENRY 2DW1 ST1 DRILLING DATA PLOT

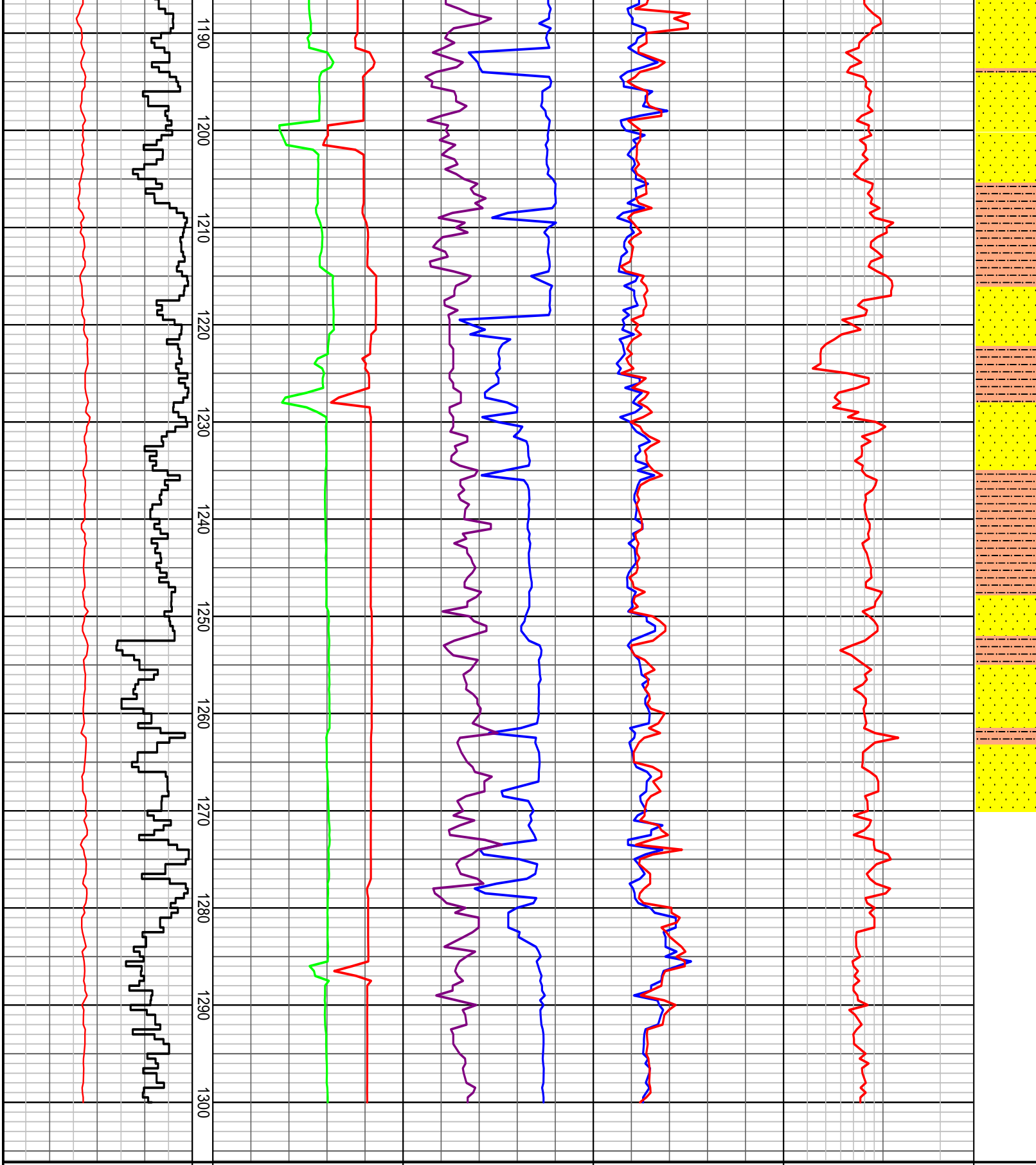




NB 10 REED RSX616M-A16 BDC
Bit
311mm (12-1/4") 3x15 3x16 jets
In: 1050.00m Out: xxxx.xxm
Drilled xxx.xxm in xx.xhrs
X.X.XX.X.X.XX.XX

1050
1060
1070
1080
1090
1100
1110
1120
1130
1140
1150
1160
1170
1180





HENRY 2DW1 ST1 DRILLING DATA PLOT

<p>Hookload</p> <p>100 200 300 400</p> <p>klbf</p> <p>Rate of Penetration</p> <p>200 150 100 50</p> <p>m/hr</p>	<p>Standpipe Pressure</p> <p>1000 2000 3000 4000 5000</p> <p>psi</p> <p>Flow In</p> <p>240 480 720 960 1200</p> <p>USg/min</p>	<p>Bit RPM</p> <p>50 100 150 200 250</p> <p>RPM</p> <p>Weight On Bit</p> <p>10 20 30 40 50</p> <p>klbf</p>	<p>Torque Avg</p> <p>5 10 15 20 25</p> <p>kft.lb</p> <p>Torque Max</p> <p>5 10 15 20 25</p> <p>kft.lb</p>	<p>DXC</p> <p>unitless</p>	<p>3</p> <p>INTERPRETED LITHOLOGY</p>
---	--	--	---	-----------------------------------	--